

# Preparing for the Final Drive

1



# How do we get from here...to here?

2



- Selection
- Health & housing
- Feeding
- Grooming
- Training

**GENETICS +  
NUTRITION +  
MANAGEMENT +  
SHOWMANSHIP = Champions**

## Things Nutrition Can Do:

- Help develop muscle
- Add body and dimension
- Promote healthy hair and skin

## Things Nutrition Can't Do

- Fix structure
- Override genetics
- Overcome bad management



# 2018 Market Hog Selection Traits

4



Correct- Sound feet, correct knee, wide chest, level top, square hip & hock, deep rib & flank, relaxed shoulder, head up, tall front

Incorrect- straight shoulder/ hocks, flat ribbed, tight flank, short hip, round top

# Pig Selection traits

## MARKET

1. Muscle
2. Correct Leanness
3. Balance
  - Structure, design, bone, length, etc

## 2018 Trends

1. Structural Correctness
2. Fat closer to .5 to .8 inches of backfat
3. Width of base and track
4. Rib and body- big middle
5. Heavy Bone
6. Taller Front end

**Watch out for over emphasizing a single trait !**





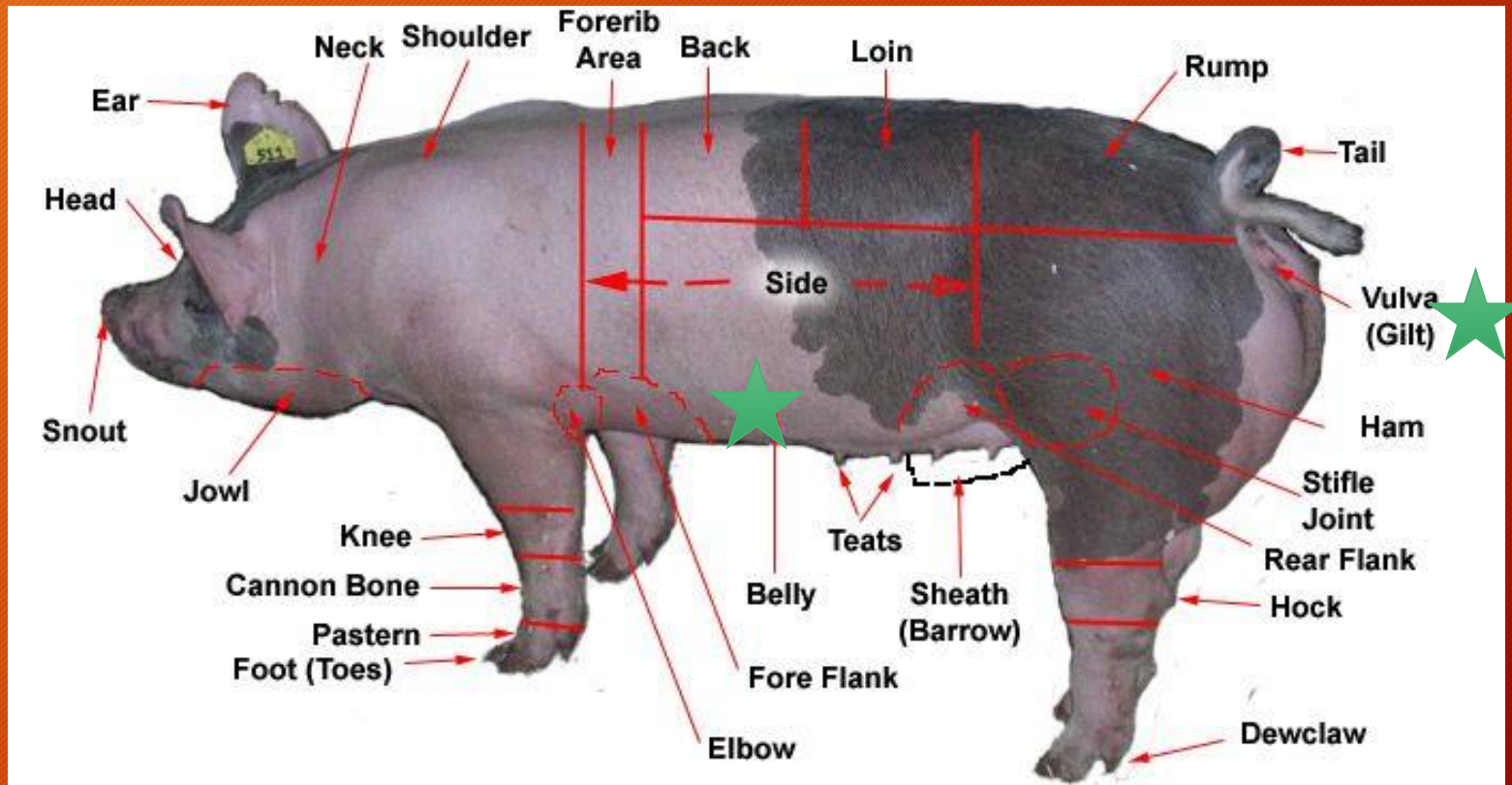
*Mapes*



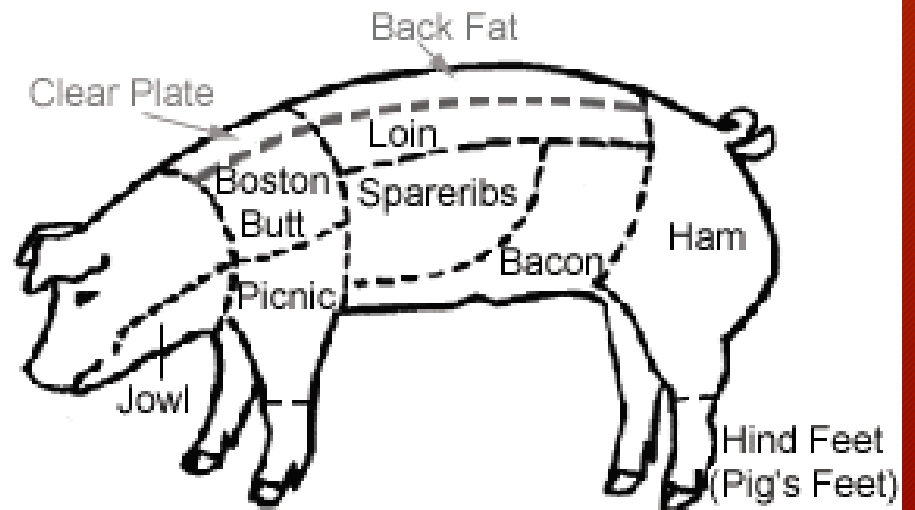
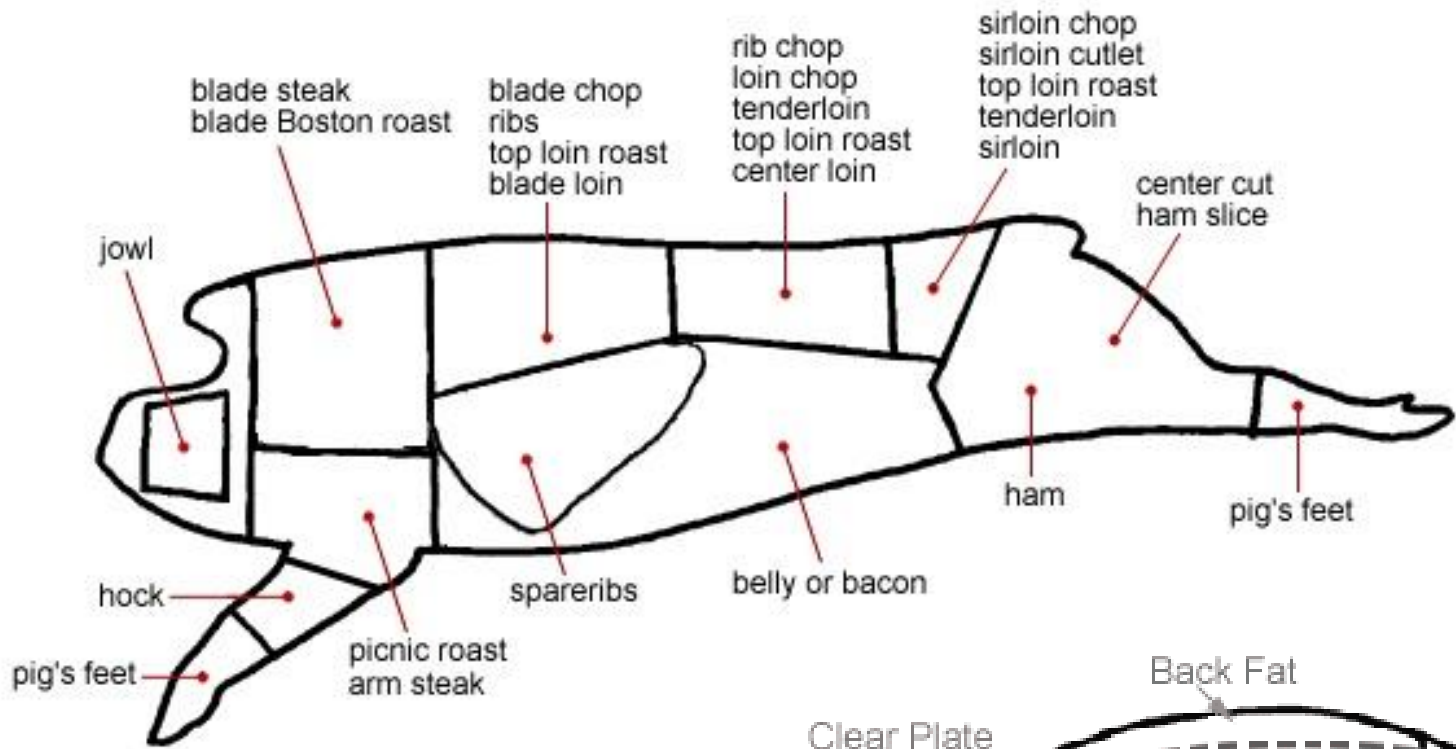


# Anatomy & Evaluation

8



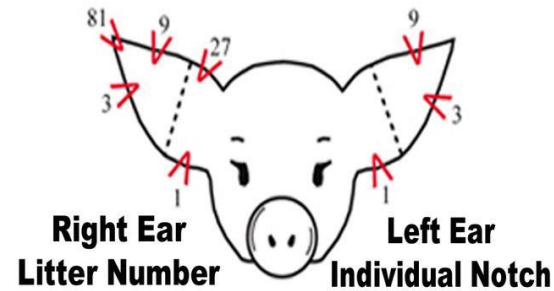




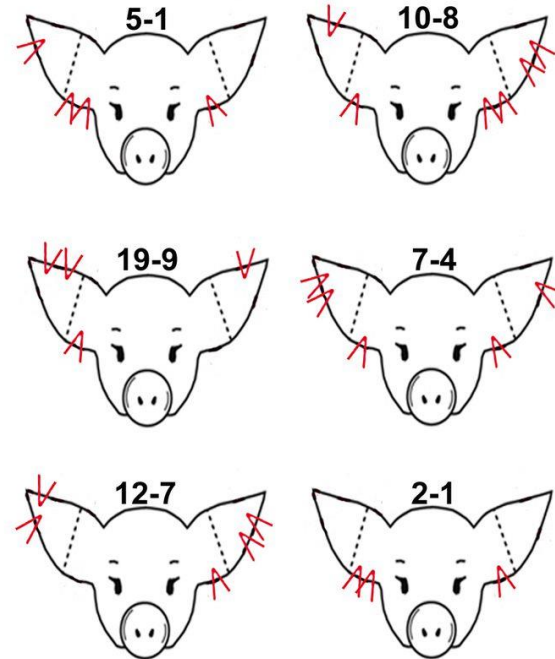
Understanding ear notching is important for:

- Telling pigs apart in a group
- Record keeping/management
- Registration paperwork for shows

## Universal Ear Notching System



Each ear is divided into four parts; Each area representing the numbers: 1,3,9 or 27; In each of the four areas, you can have up to 2 notches. Here are a few examples to get you started:





# Examples of livestock “slang”

11

- Green
- Bloom
- Soft, soggy, marshmallow
- Big backed
- Fresh
- Sure footed
- Sound as a cat
- Shag
- Chromed up

# Bringing your project home

12

- Warm and dry
- Sawdust or shavings
- Additional bedding for warmth
- Fresh water
- Vaccines, wormers
- Example: Ivomec, program in iphone for 10 day follow up.
  
- Listen for coughing
- Look for discharge, lethargic



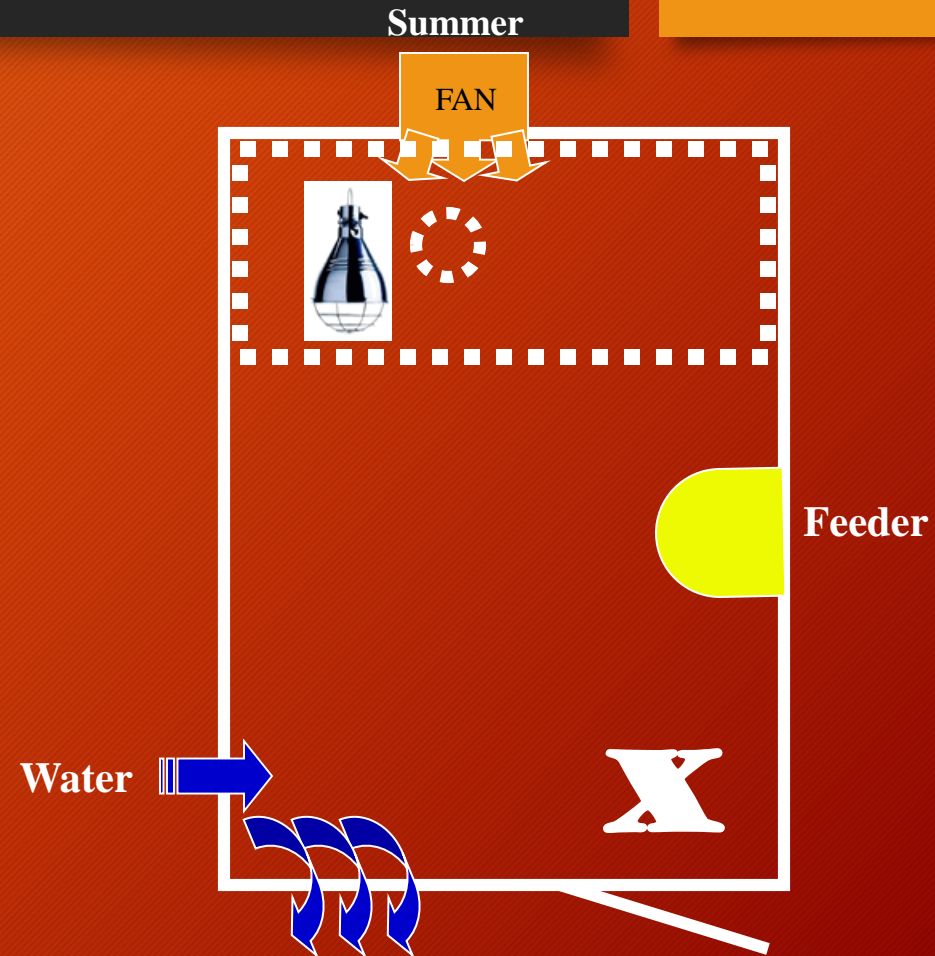
# Pig Equipment NEEDS

- Elevated Feeder
- Spring Loaded Nipple Water/ Water Tank/bucket
- Clip Feeder- use when limit feeding
- Heat Lamp/ Fans
- Box Fan with Thermostat
- Clippers + Guards
- Scale- Paul
- Pump/pressure water sprayer/mister

# Ideal Pig Pen Set Up

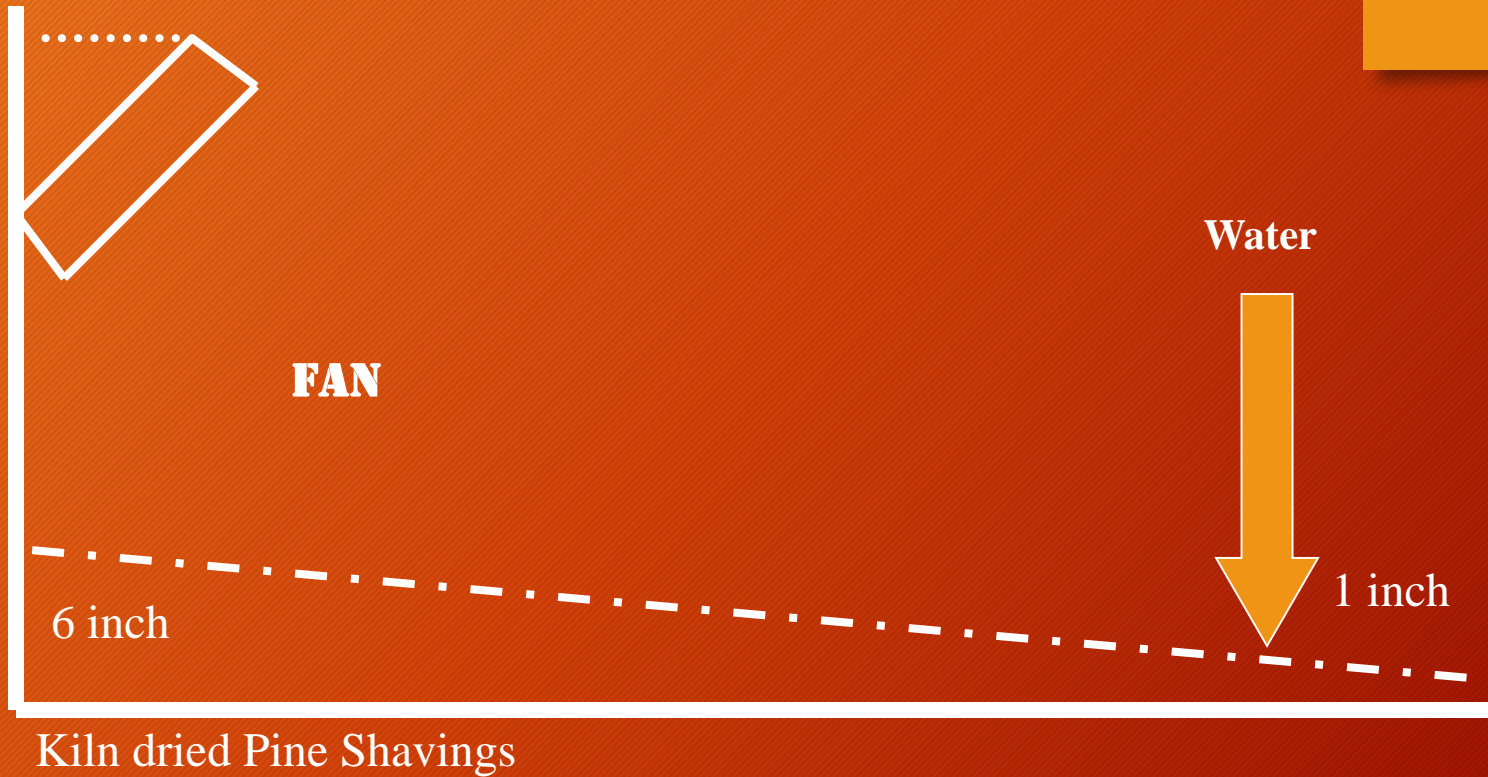
- Water Source
- Dry and Draft Free
- Hover for Spring
- Fan for Summer
- Elevated Feeder
- Fly Control
- Easy Access Gate
- Shavings/Bedding
- Straw on Shavings in Spring

**X Marks Manure Area**





# PEN Set up- Side View



# Feeding your animal

16

Creep feed vs mature ration

Understanding the growth curve

Feeding groups vs individuals

Balancing a ration:

Protein

Fat

Carbohydrates

Fiber

# WATER

- Animal is 80% Water at Birth and 50% at Show
- Fresh and Clean
- Keep out of direct sunlight
- Clean out tank
- CONSUMPTION
  - Pigs & Lambs consume 1.5 times amount of water compared to feed
  - Nipple Water should flow at 1 quart/minute
    - Use feeding cup to measure
    - 8oz water in 15 seconds





# ENERGY OF DIET

Carbohydrates - grain

Corn, milo, wheat

Fat

- Soybean - Oil
- Vegetable - Oil
- White grease - Animal fat

# PROTEIN / AMINO ACIDS

- A pig does not have a specific requirement for crude protein
  - Has requirement for specific building blocks called amino acids
  - Most limiting: **Lysine**, Threonine, Methionine
    - 1.2% Lysine to grow pigs (develop more muscle)
    - 1.0% Lysine to continue development and grow
- Show Pigs typically are always fed 1.0%Lysine unless reduction of muscle is needed

# PALATABILITY & DIGESTIBILITY

## Poor to Great

- Feather meal
- Soybean meal
- Meat & Bone meal
- Fish meal- Menhadin vs Select vs Grade
- Blood meal
- Whey protein
- Spray dried egg
- Animal Plasma
- Globulins

NOT ALL PROTEIN IS CREATED EQUALLY



# Minerals

- Calcium
  - Skeleton, bones
- Phosphorus
  - Bones, Energy
- Salt
  - Electrolyte, nerves
- Zn, Cu, Mg, Fe
  - Metabolism
- Selenium
  - Aids Vit E
- Iodine
  - Thyroid

	<b>Goats</b>	<b>Sheep</b>	<b>Cattle</b>	<b>Hogs</b>
Consumption	3% of body weight	3% of body weight	2-3% of body weight	2-3% of body weight
ADG Avg Daily Gain	.3 lb/ day	.5 - .8 lb/ day	3 lb/ day	1.5- 2 lb/ day
Conversion Feed to gain	7:1	4:1	7:1	2:1- 3:1
Avg bag count	7	9	100	12
Days on feed	100	100	275 (9 mo)	100
Target weight	70-100	120-150	1200-1400	225-290

# Show Pig MANAGEMENT

- Weigh animal 45 days before the show
  - # DAYS to Show X 2 = XX gained
  - # Lbs Gained + Actual Weight Today = Show Weight
    - Is this where we want to be????
- Target animal for specific weight
  - Target Show Weight - Actual Weight / # Days to show =
    - = Average Daily gain you need to feed for
- Weigh every 2-3 days, 3 weeks prior to show



# Feeding Recommendations



- Before 60- Sunglo Transition, Sector 2 Mix
- From 60 to 270 lb
  - 18% CP, 1.0% Lysine, 5.5% Fat
  - Sunglo Grower Pellet
  - Sunglo Gline 18
- Many Feeders starting on 18% due to more rib development and proper type of muscle developed



# Feeding Recommendations

- 130 to 270 lb
  - High Lean Genetics
  - 16% CP, .9% Lysine, 5.5-6.5% Fat
  - Sunglo Finisher
  - Take 4lbs 18% + 2lbs Smore Fill
  - Sunglo Gline 16
  
- Too Lean and Muscular
- 14%CP, .9% Lysine, 7% Fat
- Sunglo Gline Mello



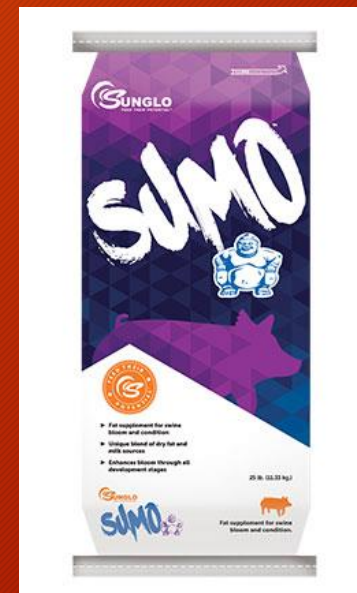
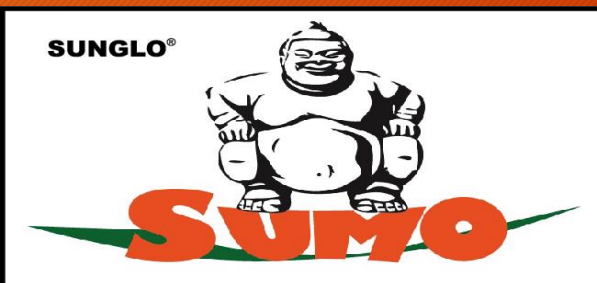
# Why top dress the feed?

- Customize to fit pigs needs
- “tweek a ration”
- Keep pig together on hold program
- Get needed ingredients into animal
- Need to raise or lower protein & fat



# FAT SOURCES

1. Add Cover, Rib, skin and hair with more sheen
2. Can add gain
3. Too much = loose stool, depression on intake
4. Powder- **SUMO**- 70%  
Oil- Liqua Fat- 99%  
Power Phat- 26%



# Feeding Recommendations

## Holding Stage

- Limit Feeding
  - Sunglo Grower (18 CP) + 8-16 oz Sunglo Final Control (topdress)/
  - 2018 Option - 1lbs Final Control + 1-2 Lb Full TANK
- 3 lb feed = 0 to 0.9 lb gain
- 4 lb feed = 0.9 to 1.3 lb gain
- 5 lb feed = 1.4 to 1.9 lb gain

# What next?

29

- Training
- Fitting & Grooming
- Supplements
- Showmanship

How do I clip my pig?

What about the face and underline?





# HIGH END PIG MANAGEMENT WHAT THE TOP FEEDERS DO!

- Wash animals weekly or more the last 30-60 days
  - Helps to make skin healthier
  - Use stain fighting shampoo on white parts of pig
- Limit Traffic in and around your pens
- Follow a vaccination and deworming schedule
- Use the advise of your mentors, breeders, feed people, extension, ag advisors.

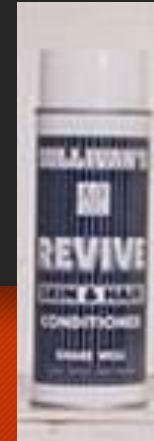
# HIGH END PIG MANAGEMENT WHAT THE TOP FEEDERS DO!

- Deep Shavings- Padding- Dry Pen
- Limited Sunlight for White Hogs
- Dark hogs limit exposed to sun light
  - Wet pig, stand 10 minutes, wet again, stand 10 minutes
  - Once base tan established, 10 minutes with oil based product
- Exercise Routine-”Heads Up”
  - Tap on jowl as walking
  - Walk in tall grass
- Clean Pen Daily

# MANAGEMENT

- Manage Skin & Hair

- Daily brushing
- Spray on conditioners
- Wash weekly or bi-weekly starting at least two months before show
- Eliminate pen wet spots
- Fly & Mosquito control measures- prevention!



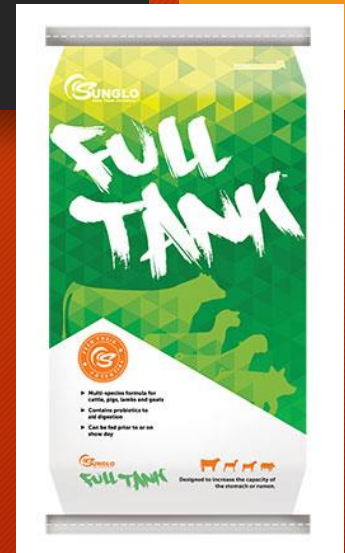
Being consistent at home with skin and hair care will give the pig a natural glow on show day.



# Feeding Recommendations

## Holding Stage

- High Fiber Additive + Probiotic
  - **Sunglo FULL TANK**
  - Designed to replace beet pulp, bran, rolled oats
  - Use with Regular Ration, (i.e **Grower, Gline meal**) when trying to restrict weight gain
  - Expand rib and flank
  - Pigs do not digest fiber well
  - Use with **Sunglo Final Control** (Topdress)



# S'MORE Fill

- Sunglo S'MORE is a dry or wet fed show supplement to enhance an award winning, full appearance for swine, sheep, goat or cattle.
- Replaces oats 1:1
- Show day fill product
- Promotes appetite



# Paylean® Label Usage

- Feed from 150 to market
  - Feed 21 to 42 days
  - Minimum of 16% CP ration
  - 9 gram per ton ration is maximum (8oz Explode)
  - Only use with Tylan as the feed medication
- 
- Explode 8oz/day= ingredients to prevent lameness included
- 
- Note: If you choose to use, use the last 21 days before show at 9 grams per ton ration





# Game On

- 28.5% Protein 50% Fat
- Designed to freshen and build backs
- Designed to be fed to pigs during the last 30-45 days when getting them ready for show
- Immediate acceptance and very palatable
- Multi-species
- Have compiled numerous Champions since the launch.



# Working with your project at home

37

- **GAIN THEIR TRUST**

Start out by getting your animal home to a comfortable environment. Then, get them used to being around you. The biggest factor in training an animal is trust. If your animal doesn't trust you, it will be an uphill battle for the rest of the show season.

- **MAKE IT A POSITIVE EXPERIENCE**

This tip kind of ties in with trust, as well. The training process will go a lot smoother for you if cleaning, feeding, washing and walking are all positive experiences. Whether it is the beginning, middle, or end of training, I always like to make a point to end on a good note. This could be something simple, such as using marshmallows as treats during walking.

- **MAKE GOALS EACH DAY BEFORE WALKING**

Training should be a relatively slow process. Start by taking your animal outside and rubbing/scratching them to make them feel comfortable. Then, you can work your way up to your desired amount of exercise. Keep in mind, your animal should be able to comfortably walk at least the amount of time you expect your class to take.

- **PLAY A RADIO IN THE BARN**

When you're in the ring, there are many different noises and distractions that occur and could scare your animal. Having a radio playing music in the barn helps get them accustomed to many noises that could take place while in the ring.

- **PRACTICE LIKE YOU SHOW**

This is something that we all hear constantly, but it is incredibly important to implement this tip. Find something or someone to act as the judge. Use trees or telephone poles, basically just about anything!

- **MAKE IT A FAMILY EVENT**

It can help to walk with other animals at the same time to make practicing more of a real-life situation. This way you can practice avoiding groups and weaving through crowds. Practice makes perfect!

- **WIN EVERY BATTLE**

Whether it is walking back to the barn, keeping the animal's head up or turning in a desired direction, always work until you get the desired outcome so they grasp the expectation.

- **CREATE A ROUTINE**

Once you have your animal used to being around you and being outside, it is a good idea to schedule a routine. A consistent schedule is a way to hold you accountable, while allowing your animal to become accustomed to a stable day-to-day activity.

## THE 2018 SANCTIONED JACKPOTS & CONTACT INFO:

5/12/18: County Pride Prospects-Cassopolis  
5/20/18: Showtime Classic Show : -Marshall  
5/26/18: Shiawassee Co. Jackpot - Corunna  
5/27/18: Blue & Gold Swine Jackpot-Hastings  
6/2/18: Thumb Livestock Jackpot - Imlay City  
6/3/18: Oakland Co. Jackpot -Davisburg  
6/3/18: Central Summer Classic -Alma  
6/3/18: Lakeshore Hog Spectacular-Ludington  
6/17/18 Spartan Jackpot-MSU Pavilion  
(Register w/ Spartan Classic)  
6/23/18: Tip of the Thumb Jackpot- Bad Axe  
6/23/18: Southern MI Showdown - Hillsdale  
7/7/18: Firecracker 300 - Davisburg  
7/21/18: State Line Swine Show-Centerville

[mstockwell@earthlink.net](mailto:mstockwell@earthlink.net)  
[bronica\\_pullen@hotmail.com](mailto:bronica_pullen@hotmail.com)  
[olivere7@iastate.edu](mailto:olivere7@iastate.edu)  
[benders@calschools.org](mailto:benders@calschools.org)  
[curellmi@hotmail.com](mailto:curellmi@hotmail.com)  
[info@oakfair.org](mailto:info@oakfair.org)  
[sbeattie@edzone.net](mailto:sbeattie@edzone.net)  
[jbabbin@walkerville.k12.mi.us](mailto:jbabbin@walkerville.k12.mi.us)

[benandlindseyvainner@yahoo.com](mailto:benandlindseyvainner@yahoo.com)  
[blpolega@airadv.net](mailto:blpolega@airadv.net)

[info@oakfair.org](mailto:info@oakfair.org)  
[ttrattles@aol.com](mailto:ttrattles@aol.com)

Michigan Swine Youth Challenge Facebook



Hannah Bollinger

[Hannah\\_Bollinger@Cargill.com](mailto:Hannah_Bollinger@Cargill.com)

616-915-3100